

Rapidlogger™

Job Monitoring System for Coiled Tubing Units



Rapidlogger Systems designs and manufactures a line of rugged and efficient job monitoring systems for oilfield applications.

At Rapidlogger Systems we have designed and developed a range of products for use in the oilfield. Our products are extremely rugged and designed for the harsh oilfield and petrochemical environments. The Rapidlogger system enhances operational safety and improves operations through its efficiency and ease of use.

Highlights

The Rapidlogger is a compact and cost-effective system for job monitoring and recording on Coiled Tubing units.

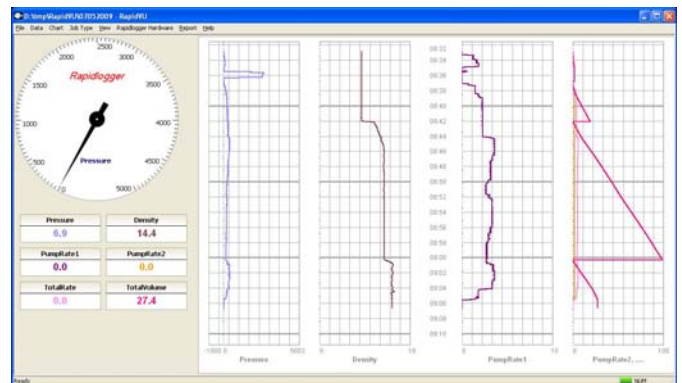
It is the most efficient system available in the market today. The system is simple to use and an equipment operator can use the system without any training. Job data can be recorded on removable and upgradeable MMC/SD flash memory cards and downloaded to USB flash drives. The standard system has 12 analog data channels, 4 frequency channels. The system is expandable and more data acquisition channels can be added as required.

The Rapidlogger does not need a PC for operation. However if the user prefers the data can be sent to a PC in real time. The large internal memory can do dozens of jobs for future retrieval. The package is very compact and suitable for panel mounting or in the control cab of oilfield trucks.

The Rapidlogger hardware can be used in many different applications. When used in the coiled tubing mode, the system measures, displays and records: depth, speed, weight, wellhead pressure, circulating pressure, pump rate and other parameters that the operator may choose. It can also trigger a solenoid valve to stop the unit if hanging weight or depth limits are exceeded. This feature is unique to Rapidlogger and is extremely useful for preventing pipe parting incidents.

Software

The Rapidlogger panel runs a real-time embedded operating system on its rugged high-speed microprocessor. The real-time operating system allows the system to turn on instantly and be crash proof. The RapidVu is the software for graphing and preparing quick and easy job reports on a PC. The RapidVu program is not required to run and record a job but if needed can acquire data from the Rapidlogger system in real time or play back a previously recorded job from a USB stick.



Specifications

Operating Temperature	-40C to 70C
Operating Environment	NEMA 4X
Analog Inputs	12/24 max, 24bit
Frequency/Depth Inputs	4/8 max
Digital Outputs	2/4 max
Analog Outputs	1/2 max
Display	LCD w/ Backlight
Computer Interface	Serial, Ethernet
Power	12/24DC, 110/240AC
Job Memory	1GB
USB Memory	1GB