

Client: El Paso Energy
Well: RichBend 27
State: TX
Country: USA

Field: Xapata-3
County: Xapata
State: TX
Country: USA

Client Rep: Bill Mahan
Date Prepared: 02/02/2008

Prepared By:
Service Company: Cementing Services Inc

Cementing Treatment Report

Rapidlogger

Client: El Paso Energy
Well: RichBend 27
State: TX
Country: USA

Recorded Job Parameter Summary:

Total Slurry Volume (bbl)	Total Displacement Volume (bbl)	Total Pump Time (min)
5.40		162.27

Maximum Treatment Pressure: 2677.70 psi
 Maximum Slurry Rate: 5.40 bbl/min
 Maximum Horsepower:

Average Treatment Pressure: 9.68 psi
 Average Slurry Rate: 4.27 bbl/min
 Average Horsepower:

Minimum Treatment Pressure: 0.30 psi
 Minimum Slurry Rate: 0.00 bbl/min
 Minimum Horsepower:

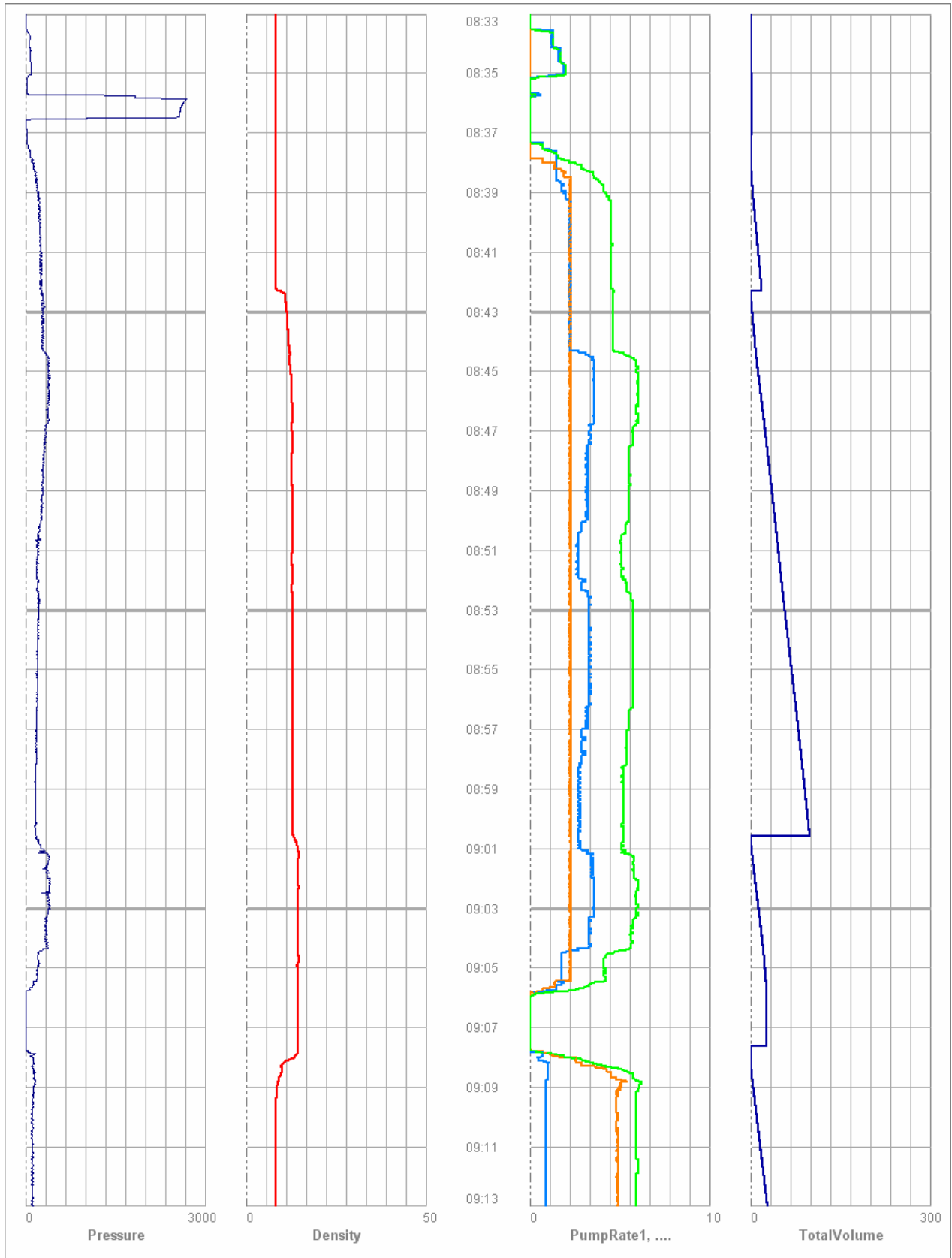
Job Message Summary:

#	Time	Message	Treating Pressure (psi)	Rate (bbl/min)	Density (lb/gal)	Total (bbl)
1	08:33	Start	16.90	0.00	8.40	0.00
2	10:05	Stop	0.90	0.00	8.40	0.00
3	08:35	Max Pressure	2677.70	0.00	8.40	0.00
4	09:08	Max Rate	164.80	5.40	9.00	0.90
5	10:04	Min Pressure	0.30	0.00	8.40	0.00
6	08:33	Min Rate	16.90	0.00	8.40	0.00

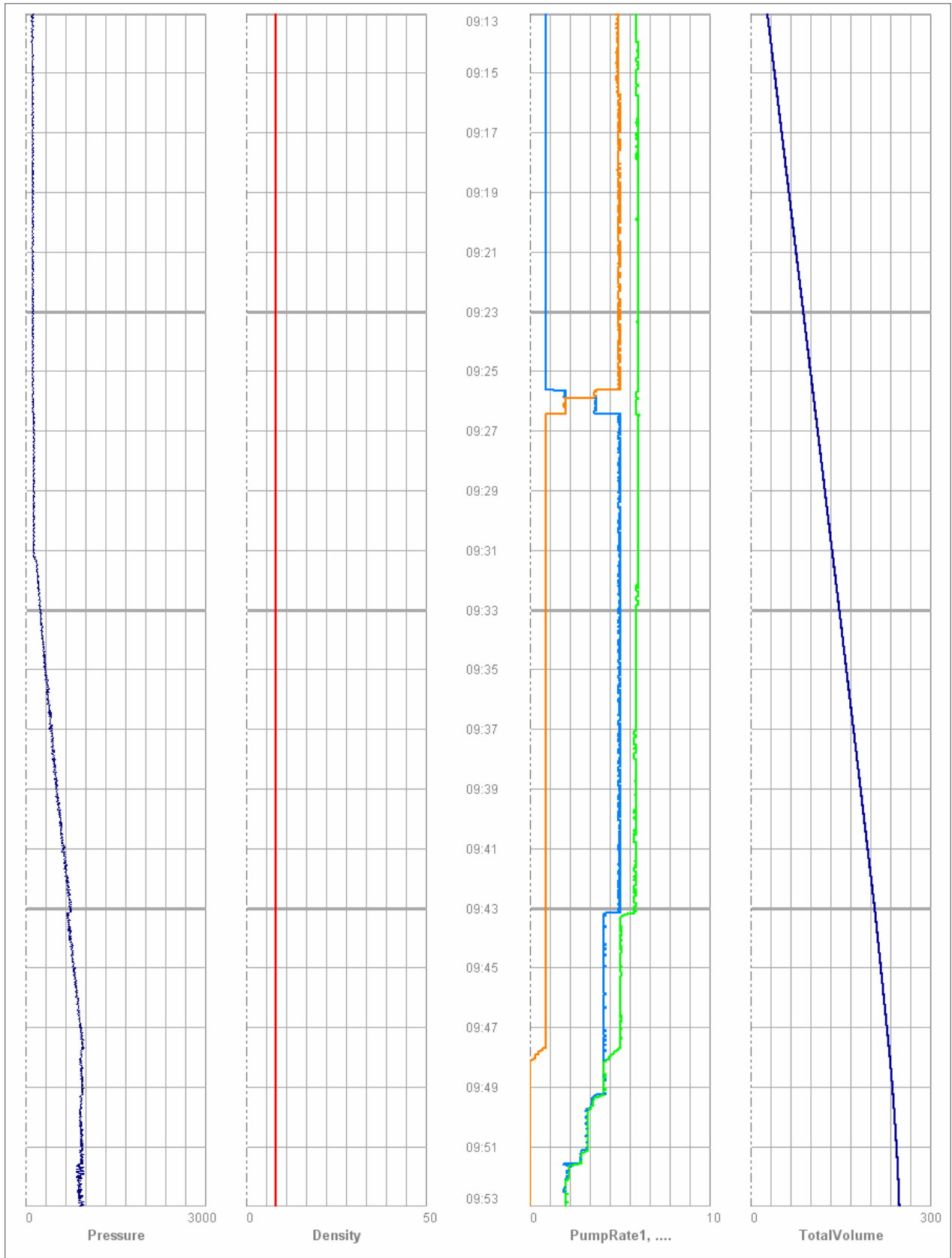
Notice:

This information is presented in good faith, but no warranty is given. No liability is assumed for advice or recommendations made. The Operator has superior knowledge of the well, the reservoir, the field and conditions affecting them. If the Operator is aware of any conditions whereby a neighboring well or wells might be affected by the treatment proposed herein it is the Operator's responsibility to notify the owner or owners of the well or wells accordingly.

Client: El Paso Energy
Well: RichBend 27
State: TX
Country: USA



Client: El Paso Energy
Well: RichBend 27
State: TX
Country: USA



Client: El Paso Energy
Well: RichBend 27
State: TX
Country: USA



Client: El Paso Energy
Well: RichBend 27
State: TX
Country: USA

Date	Time 24 hr clock	Testing Pressure PSI	Flow Rate B/M	Density LB/G	Volume BBL
02/08/2008	08:33:01	16.90	0.00	8.40	0.00
02/08/2008	08:34:01	66.90	0.00	8.40	0.00
02/08/2008	08:35:01	91.80	0.00	8.40	0.00
02/08/2008	08:36:01	2618.70	0.00	8.40	0.00
02/08/2008	08:37:01	21.50	0.00	8.40	0.00
02/08/2008	08:38:01	115.60	0.70	8.40	0.70
02/08/2008	08:39:01	213.20	2.30	8.40	2.30
02/08/2008	08:40:01	228.60	2.30	8.40	2.30
02/08/2008	08:41:01	265.20	2.30	8.40	2.30
02/08/2008	08:42:01	274.10	2.20	8.40	2.20
02/08/2008	08:43:01	283.00	2.30	11.30	2.30
02/08/2008	08:44:01	275.50	2.20	11.80	2.20
02/08/2008	08:45:01	371.70	2.30	12.40	2.30
02/08/2008	08:46:01	371.70	2.20	12.70	2.20
02/08/2008	08:47:01	324.70	2.20	12.70	2.20
02/08/2008	08:48:01	306.40	2.20	12.70	2.20
02/08/2008	08:49:01	287.30	2.20	12.80	2.20
02/08/2008	08:50:01	260.10	2.20	12.80	2.20
02/08/2008	08:51:01	206.30	2.30	12.80	2.30
02/08/2008	08:52:01	213.70	2.30	12.80	2.30
02/08/2008	08:53:01	212.60	2.30	12.80	2.30
02/08/2008	08:54:01	204.30	2.30	12.80	2.30
02/08/2008	08:55:01	197.40	2.20	12.80	2.20
02/08/2008	08:56:01	193.70	2.30	12.80	2.30
02/08/2008	08:57:01	180.50	2.30	12.80	2.30
02/08/2008	08:58:01	178.00	2.30	12.90	2.30
02/08/2008	08:59:01	160.50	2.30	12.80	2.30
02/08/2008	09:00:01	167.90	2.30	12.80	2.30
02/08/2008	09:01:01	265.80	2.30	14.40	2.30
02/08/2008	09:02:01	405.70	2.20	14.40	2.20
02/08/2008	09:03:01	402.80	2.30	14.40	2.30
02/08/2008	09:04:01	326.40	2.30	14.40	2.30
02/08/2008	09:05:01	193.10	2.30	14.30	2.30
02/08/2008	09:06:01	7.40	0.00	14.40	0.00
02/08/2008	09:07:01	7.20	0.00	14.40	0.00
02/08/2008	09:08:01	114.40	2.20	13.30	2.20
02/08/2008	09:09:01	129.90	5.10	8.70	5.10
02/08/2008	09:10:01	112.40	4.90	8.40	4.90
02/08/2008	09:11:01	105.00	4.90	8.40	4.90
02/08/2008	09:12:01	110.40	4.80	8.40	4.80
02/08/2008	09:13:01	122.50	4.90	8.40	4.90
02/08/2008	09:14:01	104.70	4.90	8.30	4.90
02/08/2008	09:15:01	104.70	4.90	8.30	4.90
02/08/2008	09:16:01	109.30	4.90	8.40	4.90
02/08/2008	09:17:01	126.70	4.90	8.40	4.90
02/08/2008	09:18:01	109.60	4.90	8.40	4.90
02/08/2008	09:19:01	117.30	5.00	8.40	5.00
02/08/2008	09:20:01	116.70	4.90	8.40	4.90
02/08/2008	09:21:01	122.70	4.90	8.40	4.90
02/08/2008	09:22:01	123.90	4.90	8.40	4.90
02/08/2008	09:23:01	119.60	4.90	8.40	4.90
02/08/2008	09:24:01	111.60	4.90	8.40	4.90
02/08/2008	09:25:01	131.60	4.90	8.40	4.90
02/08/2008	09:26:01	132.50	2.00	8.40	2.00
02/08/2008	09:27:01	149.60	0.90	8.40	0.90
02/08/2008	09:28:01	148.20	0.90	8.40	0.90
02/08/2008	09:29:01	125.30	0.90	8.40	0.90
02/08/2008	09:30:01	128.70	0.90	8.40	0.90
02/08/2008	09:31:01	133.00	0.90	8.40	0.90

Client: El Paso Energy
Well: RichBend 27
State: TX
Country: USA

02/08/2008	09:32:01	194.00	0.90	8.40	0.90
02/08/2008	09:33:01	245.50	0.90	8.40	0.90
02/08/2008	09:34:01	284.70	0.90	8.40	0.90
02/08/2008	09:35:01	319.30	0.90	8.40	0.90
02/08/2008	09:36:01	354.20	0.90	8.40	0.90
02/08/2008	09:37:01	400.00	0.90	8.40	0.90
02/08/2008	09:38:01	448.00	0.90	8.40	0.90
02/08/2008	09:39:01	499.50	0.90	8.40	0.90
02/08/2008	09:40:01	577.40	0.90	8.40	0.90
02/08/2008	09:41:01	621.10	0.90	8.40	0.90
02/08/2008	09:42:01	682.40	0.90	8.40	0.90
02/08/2008	09:43:01	743.60	0.90	8.40	0.90
02/08/2008	09:44:01	729.00	0.90	8.40	0.90
02/08/2008	09:45:01	830.60	0.90	8.40	0.90
02/08/2008	09:46:01	882.10	0.90	8.40	0.90
02/08/2008	09:47:01	933.60	0.90	8.40	0.90
02/08/2008	09:48:01	922.40	0.30	8.40	0.30
02/08/2008	09:49:01	936.70	0.00	8.40	0.00
02/08/2008	09:50:01	926.10	0.00	8.40	0.00
02/08/2008	09:51:01	938.70	0.00	8.40	0.00
02/08/2008	09:52:01	850.90	0.00	8.40	0.00
02/08/2008	09:53:01	960.70	0.00	8.40	0.00
02/08/2008	09:54:01	892.70	0.00	8.40	0.00
02/08/2008	09:55:01	942.40	0.00	8.40	0.00
02/08/2008	09:56:01	923.30	0.00	8.40	0.00
02/08/2008	09:57:01	1514.40	0.00	8.40	0.00
02/08/2008	09:58:01	1528.70	0.00	8.40	0.00
02/08/2008	09:59:01	1021.40	0.00	8.40	0.00
02/08/2008	10:00:01	4.30	0.00	8.40	0.00
02/08/2008	10:01:01	4.00	0.00	8.40	0.00
02/08/2008	10:02:01	4.30	0.00	8.40	0.00
02/08/2008	10:03:01	4.30	0.00	8.30	0.00
02/08/2008	10:04:01	4.30	0.00	8.40	0.00
02/08/2008	10:05:01	1.10	0.00	8.40	0.00