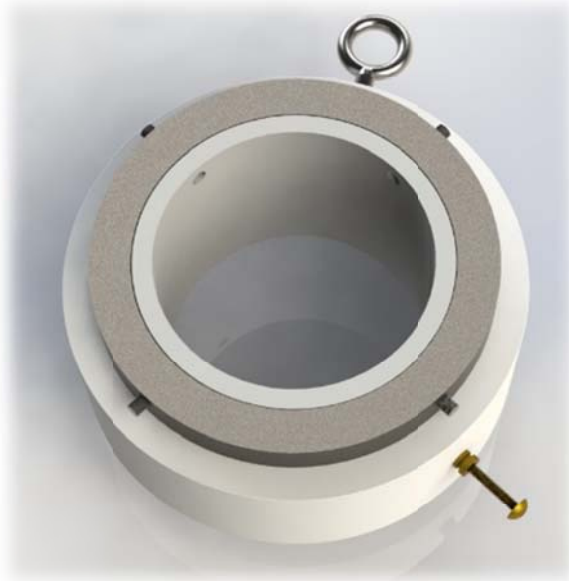


# Rapidlogger™

## Rotary Collector



### Sizes Available:

3 1/4"  
4 1/2"  
5 1/2"  
6"  
7 3/4"  
8 1/2"  
9 1/2"

### Technical Specifications:

Max Current  
Max Voltage

1 Amp  
250 V

### General Description

The Rapidlogger Slip Ring is used to carry electrical signal from a rotating drill pipe to a stationary device without restraining the continuous rotation. It allows power and signal transfer.

The Rapidlogger Slip Ring has been specifically designed for use on drill pipe for and is used for connecting directional drilling tool to surface acquisition equipment.

The Collector is used to provide continuity between pipe and stationary operations while drilling process is in progress such as coiled tubing. The collector comes in multiple sizes to fit the diameter of pipe being used.

