

# Rapidlogger Systems

## Rapidlogger Datascribe connection for SLB

Data from the Rapidlogger Unit can be sent to a Schlumberger (SLB) computer using the Datascribe format.

Open Rapidlogger System Utility and click "System Setup."

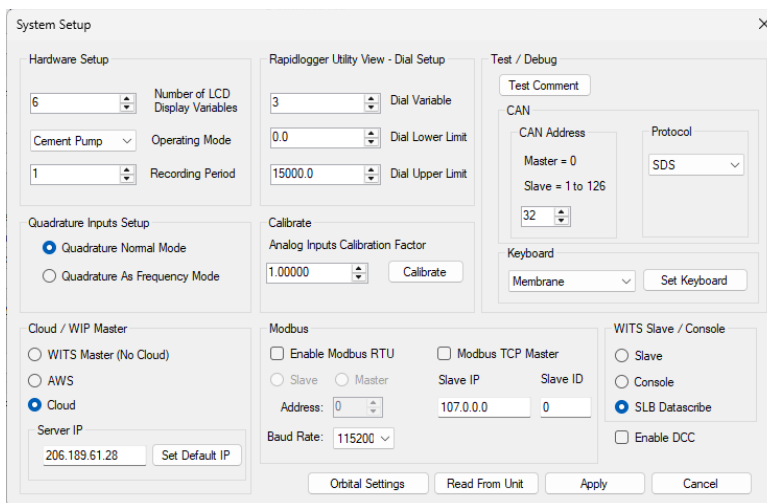
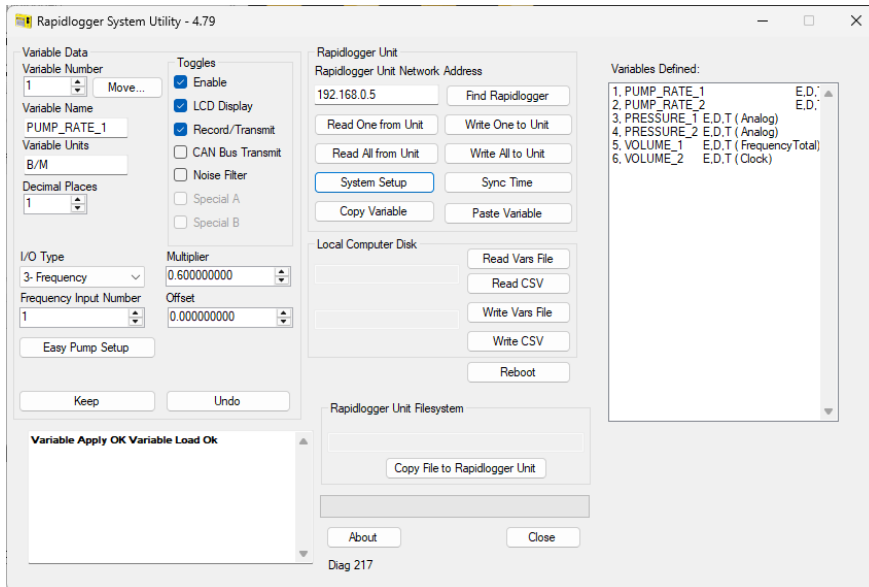


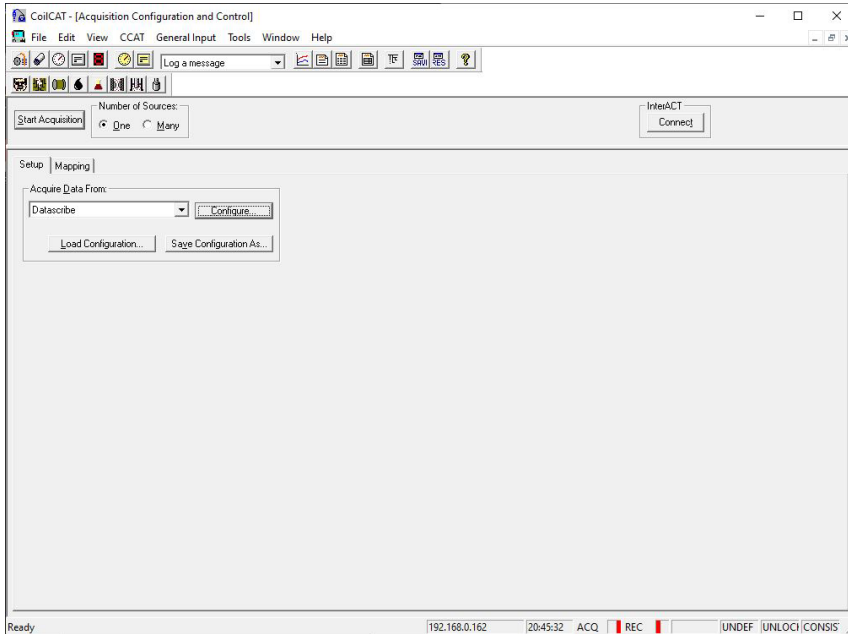
Figure 1: System Setup

Select the Slave format "SLB Datascribe" and press Apply.

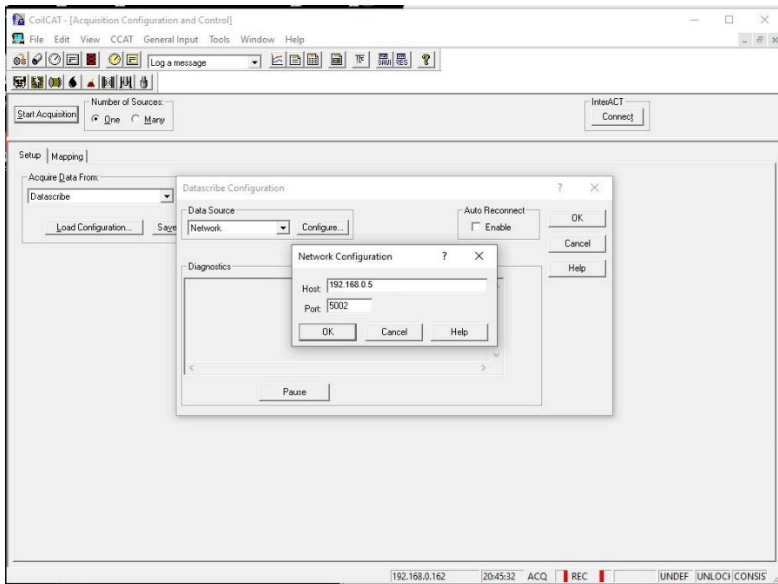
# Rapidlogger Systems

Now the default IP Address of the Rapidlogger is usually 192.168.0.5 and the port address for Rapidlogger Datascribe output is 5002.

Start CoilCAT or CemCAT or FracCAT



Select acquisition source as Datscribe / Network. Then press Configure button

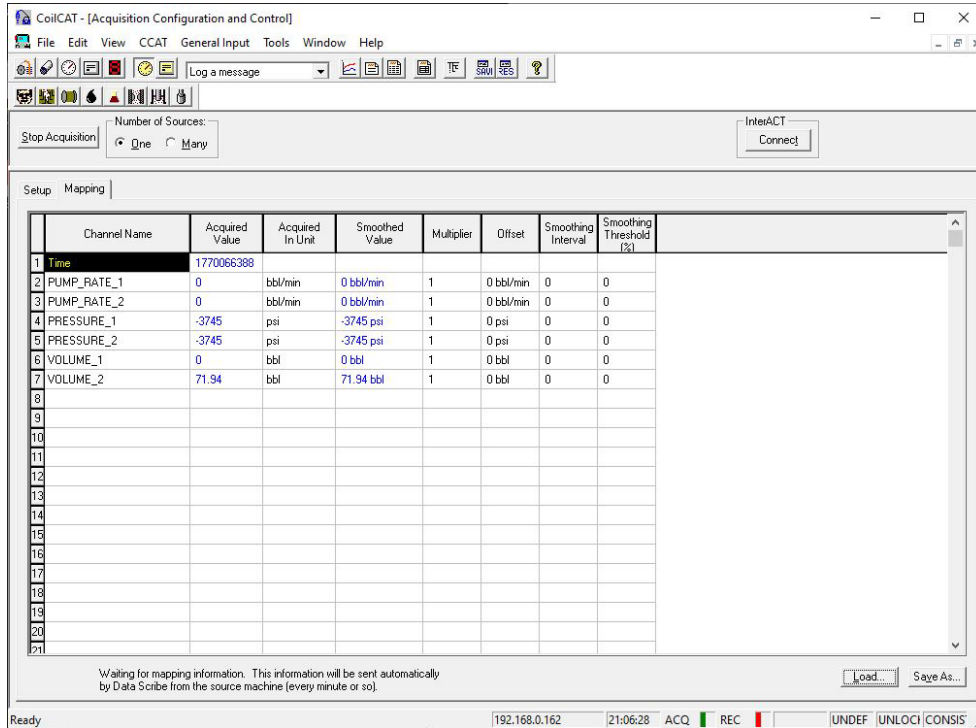


Enter the IP address and port number for the Rapidlogger.

# Rapidlogger Systems

Press START ACQUISITION and then switch to the MAPPING tab

You should see the following format data



The screenshot shows the CoilCAT software interface. The title bar reads "CoilCAT - [Acquisition Configuration and Control]". The menu bar includes File, Edit, View, CCAT, General Input, Tools, Window, and Help. Below the menu bar is a toolbar with various icons. The main window is divided into two tabs: "Setup" and "Mapping". The "Mapping" tab is active, displaying a table with the following columns: Channel Name, Acquired Value, Acquired In Unit, Smoothed Value, Multiplier, Offset, Smoothing Interval, and Smoothing Threshold (%). The table contains data for channels 1 through 7, with channel 1 being "Time" and channels 2-7 representing various pump and pressure measurements. At the bottom of the window, there is a status bar with the text "Ready" and several indicators: "192.168.0.162", "21:06:28", "ACQ", "REC", "UNDEF", "UNLOCK", and "CONSIS".

| Channel Name  | Acquired Value | Acquired In Unit | Smoothed Value | Multiplier | Offset    | Smoothing Interval | Smoothing Threshold (%) |
|---------------|----------------|------------------|----------------|------------|-----------|--------------------|-------------------------|
| 1 Time        | 177006308      |                  |                |            |           |                    |                         |
| 2 PUMP_RATE_1 | 0              | bbl/min          | 0 bbl/min      | 1          | 0 bbl/min | 0                  | 0                       |
| 3 PUMP_RATE_2 | 0              | bbl/min          | 0 bbl/min      | 1          | 0 bbl/min | 0                  | 0                       |
| 4 PRESSURE_1  | -3745          | psi              | -3745 psi      | 1          | 0 psi     | 0                  | 0                       |
| 5 PRESSURE_2  | -3745          | psi              | -3745 psi      | 1          | 0 psi     | 0                  | 0                       |
| 6 VOLUME_1    | 0              | bbl              | 0 bbl          | 1          | 0 bbl     | 0                  | 0                       |
| 7 VOLUME_2    | 71.94          | bbl              | 71.94 bbl      | 1          | 0 bbl     | 0                  | 0                       |
| 8             |                |                  |                |            |           |                    |                         |
| 9             |                |                  |                |            |           |                    |                         |
| 10            |                |                  |                |            |           |                    |                         |
| 11            |                |                  |                |            |           |                    |                         |
| 12            |                |                  |                |            |           |                    |                         |
| 13            |                |                  |                |            |           |                    |                         |
| 14            |                |                  |                |            |           |                    |                         |
| 15            |                |                  |                |            |           |                    |                         |
| 16            |                |                  |                |            |           |                    |                         |
| 17            |                |                  |                |            |           |                    |                         |
| 18            |                |                  |                |            |           |                    |                         |
| 19            |                |                  |                |            |           |                    |                         |
| 20            |                |                  |                |            |           |                    |                         |
| 21            |                |                  |                |            |           |                    |                         |

Rapidlogger to Datascribe connection is complete.